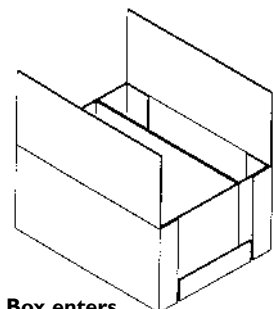
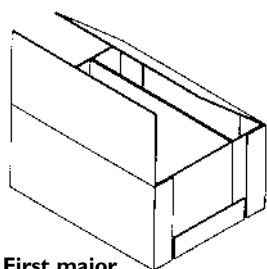


Partial Overlap Top Sealer

Model POL-232

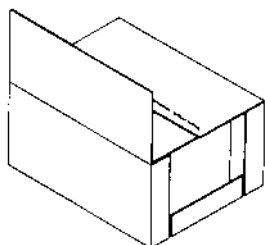


Box enters
POL-232 Top Sealer

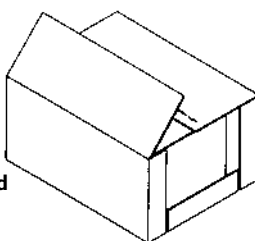


First major
flap folds inward

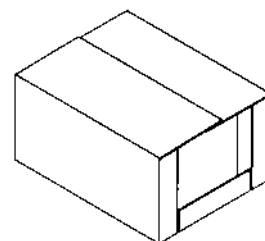
Hot melt
glue is
applied



Second major
flap folds inward



Sealed case
exits sealer



The POL-232 features:

- **Quick Changeover**
- **Compact Design**
- **Stainless Steel Paint Finish**
- **Quality Components & Parts**
- **Tubular Steel Frame**
- **Low Maintenance**
- **Quality Moen Glue System**
- **Low Air Usage**
- **UL Approved Electrical Control Panel**

The Moen model **POL-232** Partial Overlap Top Sealer seals partially overlapped top flaps with a center line of hot melt glue at a rate of up to 60 cases per minute. Using fixed plows to squarely fold the box flaps, the **POL-232** positively seals the glue joint with a series of urethane compression rollers. This quick-change machine can also be built as a Top Flap Taper (**POL-232T**) with flaps that meet in the center of the case at a rate of up to 30 cases per minute.



Quality Corrugated Packaging Equipment

12333 East Los Nietos Road, Santa Fe Springs, CA 90670
(562) 946-6381 ■ FAX (562) 946-3200

Email: sales@moenindustries.com

Web Site: www.moenindustries.com



Partial Overlap Top Sealer

Model POL-232

Forming Machine Air Consumption

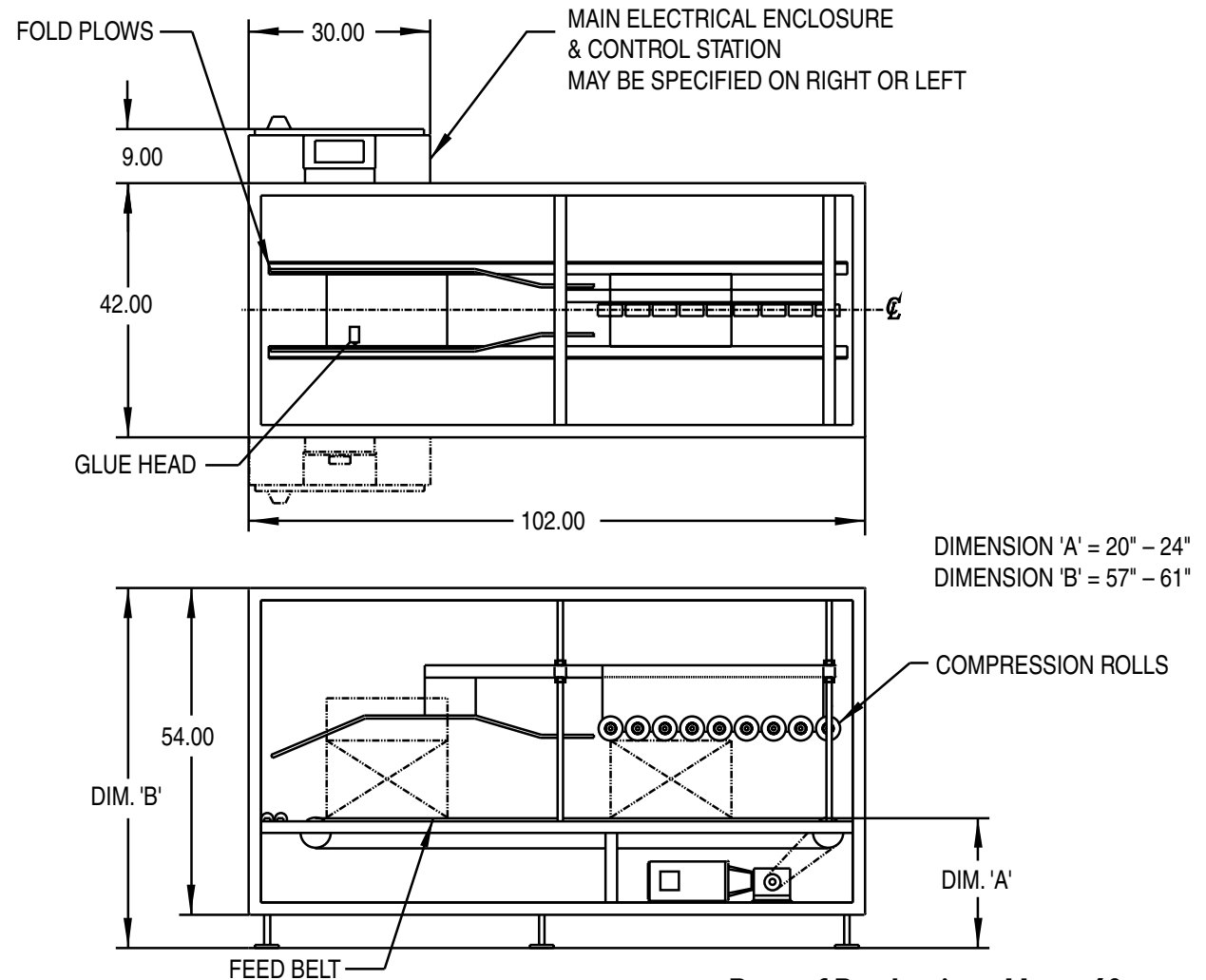
Air usage per cycle in SCFM (operating pressure = 60 PSIG)	.024
---	-------------

Electrical Requirements

Standard	Optional
230 VAC	460 VAC
3 Phase	3 Phase
60 Hz	60 Hz
15 Amps	8 Amps

Box I.D.

	Min	Max
Length (Between Ends)	7"	18"
Width	8"	20"
Depth	6"	14"



Rate of Production: Up to 60 c.p.m.



Quality Corrugated Packaging Equipment

12333 East Los Nietos Road, Santa Fe Springs, CA 90670

(562) 946-6381 ■ FAX (562) 946-3200 ■ Email: sales@moenindustries.com Web Site: www.moenindustries.com

MPOL-232-7-26-05