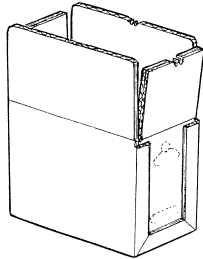
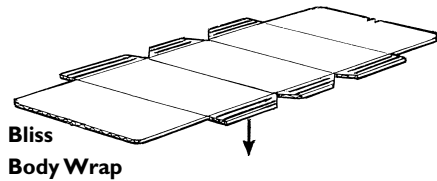
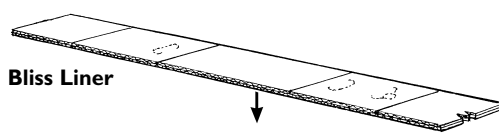


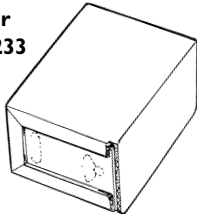


Model PFI06-TPB

2-Piece Bliss Former



Sealed on our Model FOL-233 Top Sealer



2-Piece Bliss box with FOL Top Closure (5 gallon size)



The PF106-TPB features:

- **Belt Drive System**
- **Color Touch Screen Control Panel and Operator Interface**
- **Quality Components & Parts**
- **24 VDC Machine Control**
- **Positive Glue Compression**
- **Quick Changeover Features**
- **Welded Tubular Steel Frame**
- **Vacuum Assist Feed Systems**
- **Stainless Steel Paint Finish**
- **UL Approved Electrical Control Panel**
- **Optional Bundle Feeding Systems**
- **Optional Dunnage Removal**
- **Optional High Capacity Adhesive Feeder**
- **Optional Automatic Feeding of Material to Hoppers**
- **Optional High Capacity Stack Transfer System**

The **PF106-TPB**, 2-Piece Bliss Former combines our 40+ years experience in Bliss box forming with field proven technologies in electronics, pneumatics, and mechanics. The Bliss Liner and Bliss Body Wrap Vacuum Feed Systems are used to reduce down time and material waste. Quality components and parts, welded tubular steel frame and proven Moen Glue System add longevity to the **PF106-TPB**.



Quality Corrugated Packaging Equipment

12333 East Los Nietos Road, Santa Fe Springs, CA 90670
(562) 946-6381 ■ FAX (562) 946-3200

Email: sales@moenindustries.com

Web Site: www.moenindustries.com



2-Piece Bliss Former

Model PF106-TPB

Compressed Air Consumption

Air usage per cycle in SCFM **2.968**

Electrical Requirements

Standard **Optional**

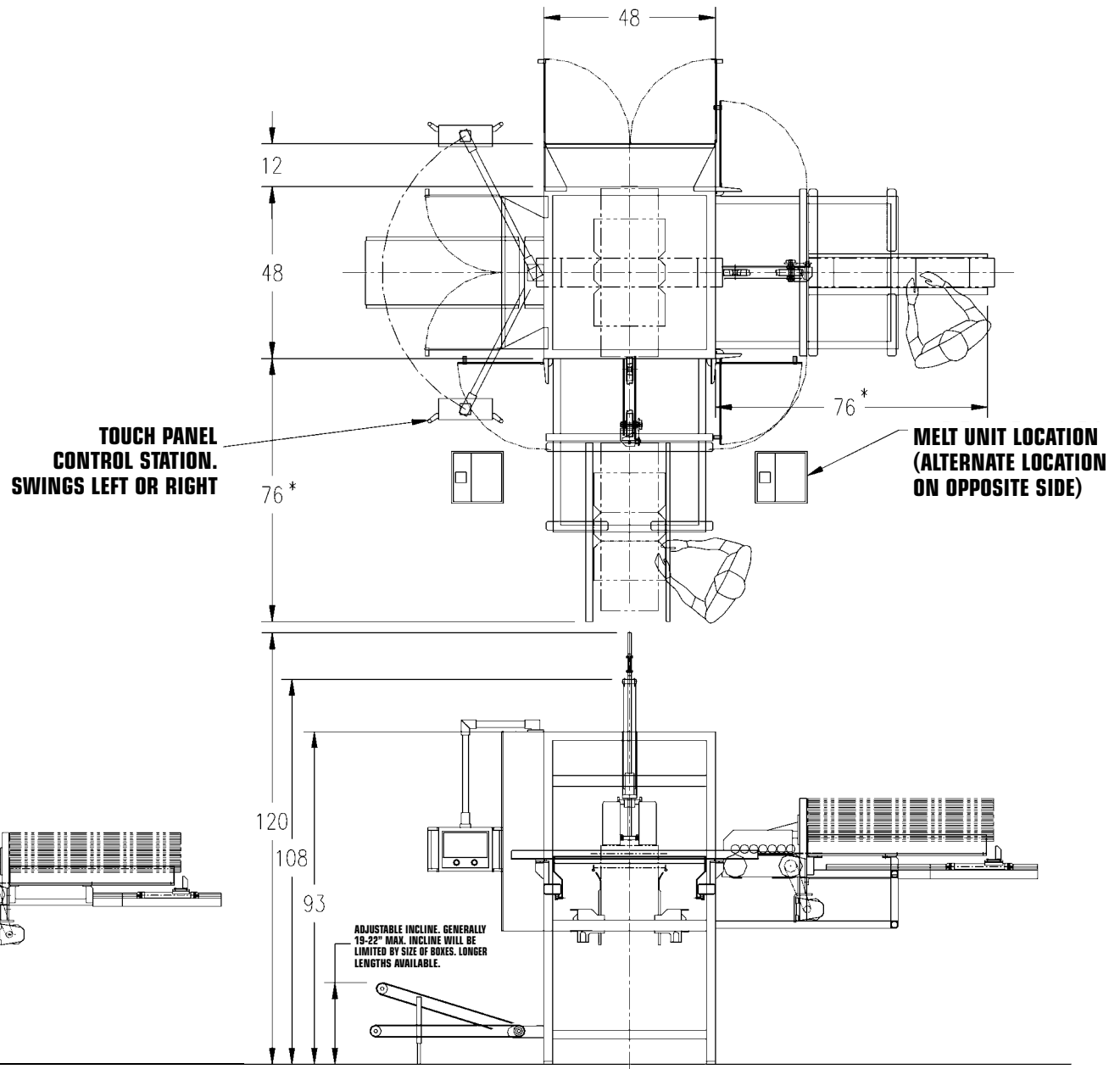
230 VAC **460 VAC**

3 Phase **3 Phase**

60 Hz **60 Hz**

30 Amps **15 Amps**

Box I.D.	Min	Max
Parallel with Ends	8"	25"
Across Compression Ends	8"	24"
Depth with Flaps	4"	20"
Depth without Flaps	4"	14"



Rate of Production: Up to 30 c.p.m



Quality Corrugated Packaging Equipment

12333 East Los Nietos Road, Santa Fe Springs, CA 90670

(562) 946-6381 ■ FAX (562) 946-3200 ■ Email: sales@moenindustries.com Web Site: www.moenindustries.com

PF106TPM/9-21-06r2